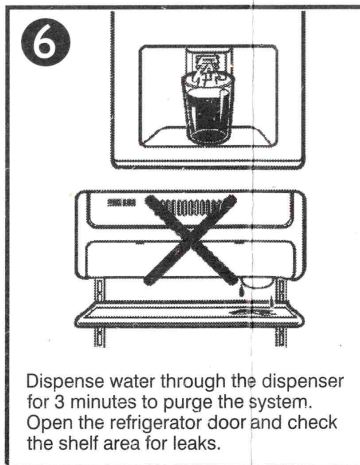
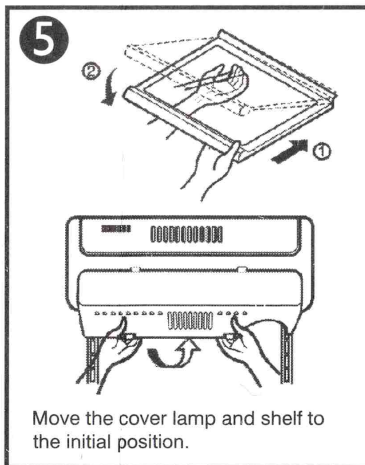
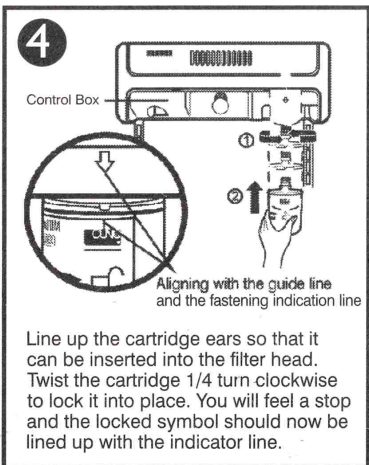
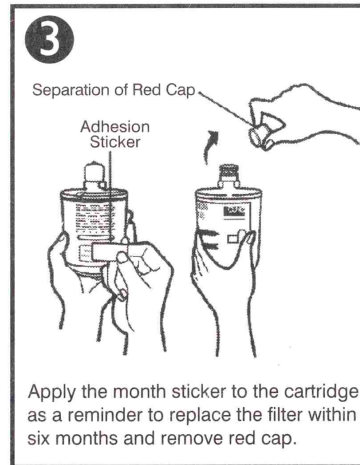
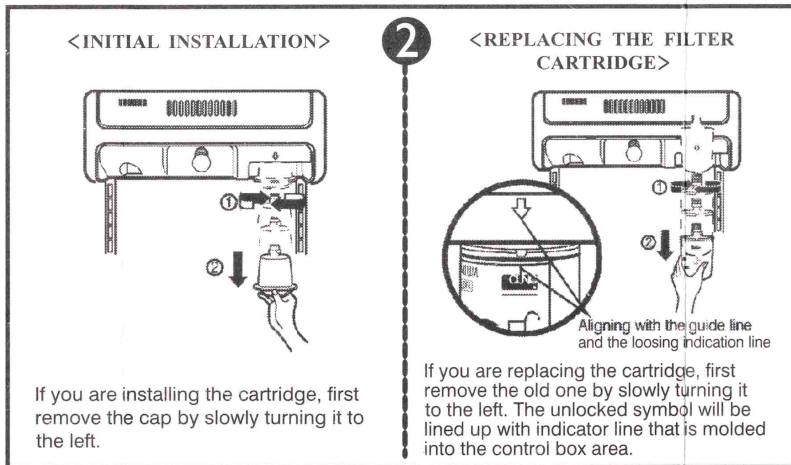
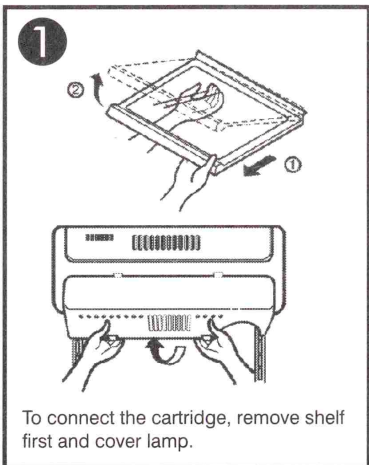
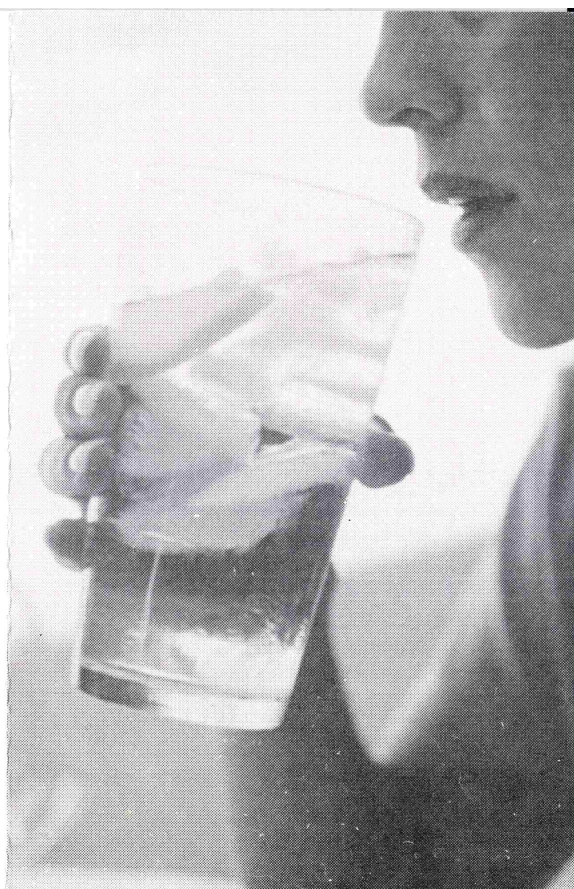


PROCEDURE OF WATER FILTER INSTALLATION AND REPLACEMENT



Function	Chemical / Mechanical
Capacity	500 gal. (1,892 liters)
Rated Flow	0.5 gpm (1.9 lpm)
Do not use with water that is microbiologically unsafe or of unknown quality without adequate disinfection before or after the system.	
Taste/Odor	Yes
Chlorine	Yes
Dirt	Yes
Rust	Yes
Min. Op. Temp.	33°F(0.6°C)
Max. Op. Temp.	100°F(38°C)
Min. Op. Pressure	20 psi (138 kPa)
Max. Op. Pressure	125 psi (862 kPa)



PREMIUM FILTER

For replacement filters or for service contact your local dealer or visit us at www.lgappliances.com or call us at 1-877-714-7486

Replacement Cartridge Part Number: 5231JA2002A
For use in Model 5231JA2002A-S



Tested and certified by NSF International against NSF/ANSI Std 42 in Model 5231JA2002A-S for the reduction of Chlorine, Taste and Odor plus Nominal Particulate Class III.

CAUTION:

To reduce the risk of property damage due to water leakage:

- Read and follow instruction and use installations.
- Install on **COLD** water lines only.
- Comply with all state and local plumbing codes.
- Install a pressure limiting device and water hammer arrester for inlet water pressures exceeding 80 psi (552 kPa). Refer to Uniform Plumbing Code, Sections 608.2 and 609.10.
- Never install or operate where inlet water pressure may exceed 120 psi (827 kPa).
- Protect filter from freezing. Remove filter in temperatures drop below 33°F (0.6°C).
- Replace cartridge at specified service interval. Cartridge **MUST** be replaced at least every 12 months.

Manufactured for LG® Electronics by:



a 3M company
CUNO Incorporated
400 Research Parkway
Meriden, CT 06450 U.S.A.
www.cuno.com

© 2007 3M Company. All rights reserved.
CUNO is a trademark of 3M Company used under license.
LG is a registered trademark of LG Electronics Co., Ltd.
NSF is a registered trademark of NSF International.
INST7075 0107

Manufactured for LG® Electronics by:
CUNO Incorporated
a 3M Company
400 Research Parkway
Meriden, CT 06450 U.S.A.



Performance Data Sheet

Models Number 5231JA2002A-S

Use with replacement cartridge 5231JA2002A

This system has been tested according to NSF/ANSI Standards 42 for the reduction of the substances listed below. The concentration of the indicated substances in water entering the system was reduced to a concentration less than or equal to the permissible limit for water leaving the system as specified in NSF/ANSI 42.



System tested and certified by NSF International against NSF/ANSI Standard 42 for the reduction of Chlorine Taste and Odor and Nominal Particulate Class III.

Capacity: 500 gal (1,892 L)

Substance	Average Influent Concentration	Influent Challenge Concentration. Units apply to each row	Avg. Product Water Concentration	Average % Reduction	NSF % reduction req. or Max. permissible product water concentration
Nominal Particulate Class I Particle size: >0.5 to < 1 um	24,333	At least 10,000 particles/ml	915	96	≥ 85%
Chlorine taste and odor Class III	1.9	2.0 mg/L ± 10%	0.07	96.4	≥ 50%

Note that while the testing was performed under standard laboratory conditions, actual performance may vary.

Application Guidelines/Water Supply Parameters	
Service flow	0.5 gpm (1.89 lpm)
Water pressure	20 - 125 psi (138 - 862 kPa)
Water temperature	33 °F - 100° F (0.6 °C - 38 °C)

⚠ WARNING :

To reduce the risk associated with ingestion of contaminants due to use with water that is microbiologically unsafe or of unknown quality.
Do not use with water that is microbiologically unsafe or of unknown quality without adequate disinfection before or after the system.

Systems must be installed and operated in accordance with manufacturer's recommended procedures and guidelines.

Warranty: See Warranty Card for Details.

CAUTION:

- To reduce the risk of property damage due to water leakage:
- Read and follow Use instructions before installation and use of this system.
 - Install on COLD water lines only.
 - Comply with all state and local plumbing codes.
 - Install a pressure limiting device and water hammer arrester for inlet water pressures exceeding 80 psi (552 kPa). Refer to Uniform Plumbing Code, Sections 608.2 and 609.10.
 - Never install or operate where inlet water pressure may exceed 120 psi (827 kPa).
 - Protect filter from freezing. Remove filter in temperatures below 33°F (0.6°C).
 - Replace cartridge at specified service interval. Cartridge **MUST** be replaced at least every 12 months.

For a replacement cartridge or for service contact your local dealer. You can also visit our website: www.lgappliances.com or call 1-877-714-7486.

Manufactured for LG® Electronics by:

CUNO Incorporated
a 3M Company
400 Research Parkway
Meriden, CT 06450 U.S.A.
Telephone: 203-237-5541
Fax: 203-238-8701